

Amsterdam

Barajasweg 70

Objektnummer: NL24185496



KAUFPREIS: 925.000 EUR • WOHNFLÄCHE: ca. 138 m² • ZIMMER: 5

Objektnummer: NL24185496 - 1043 CP Amsterdam

- Auf einen Blick
- Die Immobilie
- Auf einen Blick: Energiedaten
- Ein erster Eindruck
- Ausstattung und Details
- Alles zum Standort
- Weitere Informationen
- Ansprechpartner

Objektnummer: NL24185496 - 1043 CP Amsterdam

Auf einen Blick

Objektnummer	NL24185496	Kaufpreis	925.000 EUR
Wohnfläche	ca. 138 m ²	Wohnung	Apartment
Zimmer	5		
Schlafzimmer	3		
Badezimmer	1		
Baujahr	2023		

Objektnummer: NL24185496 - 1043 CP Amsterdam

Auf einen Blick: Energiedaten

Energie-
Effizienzklasse

A+

Objektnummer: NL24185496 - 1043 CP Amsterdam

Die Immobilie



Objektnummer: NL24185496 - 1043 CP Amsterdam

Die Immobilie



Objektnummer: NL24185496 - 1043 CP Amsterdam

Die Immobilie



Objektnummer: NL24185496 - 1043 CP Amsterdam

Die Immobilie



Objektnummer: NL24185496 - 1043 CP Amsterdam

Die Immobilie



Objektnummer: NL24185496 - 1043 CP Amsterdam

Die Immobilie



Objektnummer: NL24185496 - 1043 CP Amsterdam

Die Immobilie



Objektnummer: NL24185496 - 1043 CP Amsterdam

Die Immobilie



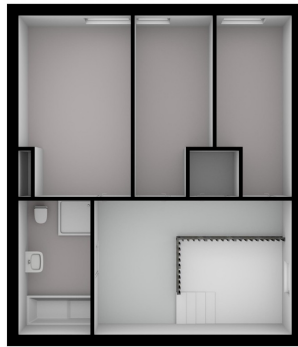
Objektnummer: NL24185496 - 1043 CP Amsterdam

Die Immobilie



Objektnummer: NL24185496 - 1043 CP Amsterdam

Die Immobilie



Objektnummer: NL24185496 - 1043 CP Amsterdam

Die Immobilie



Begane grond



Entresol

Objektnummer: NL24185496 - 1043 CP Amsterdam

Ein erster Eindruck

Great living in a sustainable 'Stadswoning woning' completely surrounded by greenery in an up-and-coming neighbourhood! This beautiful new-build apartment (138 m²) spread over two floors is part of the sustainable new-build project VERTICAL and has a living floor with open kitchen, 3 bedrooms, bathroom, separate toilet, storage room and terrace (approx. 14 m²) and is located on a stone's throw from Sloterdijk Station.

Objektnummer: NL24185496 - 1043 CP Amsterdam

Ausstattung und Details

The apartment is located in the middle and lowest tower, Vertical Center, divided over the ground floor and the mezzanine floor.

Ground floor: Direct access to the spacious living room. The living room is a playful space with a difference in height, open kitchen and a spacious adjoining terrace. At the rear there is a hall with separate toilet with fountain, an internal storage room with washing machine connection and a staircase to the sleeping floor.

Mezzanine floor: Spacious landing with access to all areas. The three bedrooms are located at the front together with the storage room. At the back you find the bathroom with toilet, bath, shower and sink.

Objektnummer: NL24185496 - 1043 CP Amsterdam

Alles zum Standort

This apartment is located in the rapidly changing area around Sloterdijk Station in Amsterdam-West. What was once a monocultural location is now growing into a mixed living and working area, a true hub location. Here you live comfortably and can easily get anywhere. VERTICAL is within walking distance of train, bus and metro station Amsterdam-Sloterdijk. Within fifteen minutes you are at Schiphol Airport or in the bustling center of Amsterdam. A ten-minute bike ride takes you to Westerpark, and within a half-hour drive are the beautiful beaches for a relaxing day by the sea. Sloterdijk is hip and happening, as evidenced by the hotspots De Testtafel, the Mooiste Markt and restaurant Wissenkerke that contribute to the neighborhood's vibrant atmosphere. Enjoy the diversity, taste the flavors and get to know the local culture. Sloterdijk is waiting for you to be discovered!

Objektnummer: NL24185496 - 1043 CP Amsterdam

Weitere Informationen

VERTICAL Project This garden home is part of the "VERTICAL" project, which consists of three sub-areas: "East" with a tall tower with 112 apartments, "Center" with 14 town and garden homes in low-rise buildings, and a mid-rise tower "West" with 42 rental homes. Designed by five Dutch architects, the project meets contemporary sustainability requirements, making VERTICAL one of the most sustainable buildings in the Netherlands. Great attention has been paid to outdoor space and workplaces, with green facades and roof gardens that help reduce heating of the building. The icing on the cake is the "shared living" concept, which allows you to meet friends or neighbors on a floor in the residential tower. The complex also features a gym, shared work space and 2 bookable guest room.

Objektnummer: NL24185496 - 1043 CP Amsterdam

Ansprechpartner

Weitere Informationen erhalten Sie über Ihren Ansprechpartner:

Joan Dik, Marie Christine Lodewijk & Elisabeth van Zijverden

De Lairesestraat 51 Amsterdam
E-Mail: info@von-poll.nl

To Disclaimer of von Poll Immobilien GmbH

www.von-poll.com