

Amsterdam

# Ceramiquelaan 319

Objektnummer: NL24185509



KAUFPREIS: 1.150.000 EUR • WOHNFLÄCHE: ca. 146 m<sup>2</sup> • ZIMMER: 4

Objektnummer: NL24185509 - 1031KG Amsterdam

- Auf einen Blick
- Die Immobilie
- Ein erster Eindruck
- Ausstattung und Details
- Alles zum Standort
- Weitere Informationen
- Ansprechpartner

Objektnummer: NL24185509 - 1031KG Amsterdam

## Auf einen Blick

Objektnummer	NL24185509	Kaufpreis	1.150.000 EUR
Wohnfläche	ca. 146 m <sup>2</sup>	Wohnung	Apartment
Zimmer	4		
Schlafzimmer	3		
Badezimmer	1		
Baujahr	2021		

Objektnummer: NL24185509 - 1031KG Amsterdam

## Die Immobilie



Objektnummer: NL24185509 - 1031KG Amsterdam

## Die Immobilie



Objektnummer: NL24185509 - 1031KG Amsterdam

## Die Immobilie



Objektnummer: NL24185509 - 1031KG Amsterdam

## Die Immobilie



Objektnummer: NL24185509 - 1031KG Amsterdam

## Die Immobilie





Objektnummer: NL24185509 - 1031KG Amsterdam

## Die Immobilie



Objektnummer: NL24185509 - 1031KG Amsterdam

## Die Immobilie



Objektnummer: NL24185509 - 1031KG Amsterdam

## Die Immobilie



Objektnummer: NL24185509 - 1031KG Amsterdam

## Die Immobilie



Objektnummer: NL24185509 - 1031KG Amsterdam

## Die Immobilie



Objektnummer: NL24185509 - 1031KG Amsterdam

## Die Immobilie



Objektnummer: NL24185509 - 1031KG Amsterdam

## Die Immobilie



Objektnummer: NL24185509 - 1031KG Amsterdam

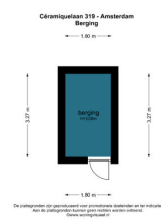
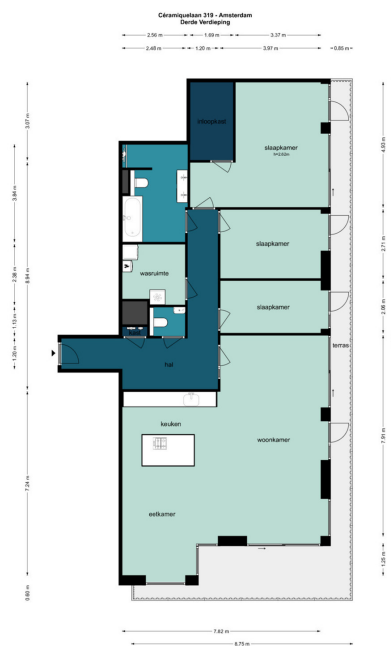
## Die Immobilie





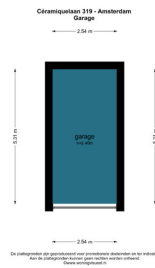
Objektnummer: NL24185509 - 1031KG Amsterdam

## Die Immobilie



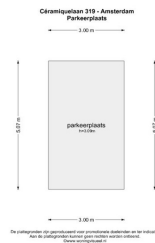
Objektnummer: NL24185509 - 1031KG Amsterdam

## Die Immobilie



Objektnummer: NL24185509 - 1031KG Amsterdam

## Die Immobilie



**Objektnummer: NL24185509 - 1031KG Amsterdam**

## Ein erster Eindruck

Ceramiquelaan 319 On the third floor of a remarkable building with stunning architecture in Amsterdam Noord, "THE WING," lies this spacious CORNER apartment of 146 m<sup>2</sup>, featuring a 30 m<sup>2</sup> wraparound terrace with a view of the Schegpark, which is currently under construction. There is the option to purchase a parking space in the basement of the building, with or without a charging station. The cost for the parking space with a charging station is €75,000, and without a charging station €50,000.

Objektnummer: NL24185509 - 1031KG Amsterdam

## Ausstattung und Details

### Layout:

Access the corner apartment through the spectacular shared entrance. All rooms can be reached from the hallway. This is an exceptionally spacious apartment with a generous living area, a Siematic island kitchen equipped with a Bora cooktop, Quooker, and Siemens oven and microwave. From the living-dining area, you can access the terrace, which enjoys delightful afternoon and evening sun.

The master bedroom features a luxurious walk-in closet, and from this room, you can step directly onto the balcony with unobstructed views of the Shell Tower and the 'Schegpark'. The bathroom is highly luxurious, finished with high-quality fixtures and tiling, and includes a bathtub, walk-in shower, double sink, and toilet. There is also a separate luxurious toilet in the hallway. Finally, there is a storage area for the washing machine, dryer, and technical installations.

The building, The Wing, has a striking fold in its structure. The architect chose this design for a reason; it was inspired by the location by Schegpark and views of the IJ. The aim was to create as much view as possible. Bringing the outside in was the idea of Paul Stavert from Powerhouse Company. The horizontal lines emphasize the grace of the balconies, which playfully alternate between straight and rounded corners. Additionally, the façade steps back at certain points, making some balconies particularly deep. The Wing has an Italian flair, due to the use of natural stone in the façade.

Objektnummer: NL24185509 - 1031KG Amsterdam

## Alles zum Standort

LOCATION The Wing is situated in a unique location, between the dynamic Schegpark and the green, central neighborhood square. The shape of the building, resembling a wing, creates a unique dynamic between nature and architecture. The general garden of The Wing is located by the Schegpark, allowing every resident to enjoy this unique spot with views of the EYE Film Museum and the A'DAM Tower. The garden is beautifully designed by landscape architect Paul Plambeck from Buro Sant and Co, featuring a large characteristic tree, various grasses and flowering plants, a pathway, and a custom concrete seating area.

**Objektnummer: NL24185509 - 1031KG Amsterdam**

## Weitere Informationen

FEATURES - Living area of 146 m<sup>2</sup>; - 3 bedrooms; - Luxurious Siematic kitchen; - High-quality sanitary ware and tiling; - Many windows; - The entire apartment is equipped with underfloor heating and cooling; - Option to purchase parking spaces with/without charging station; (with €75,000, without €50,000); - Internal storage room; - VvE service costs € 301,72, - per month; - Leasehold perpetually bought off;

Objektnummer: NL24185509 - 1031KG Amsterdam

## Ansprechpartner

Weitere Informationen erhalten Sie über Ihren Ansprechpartner:

Joan Dik, Marie Christine Lodewijk & Elisabeth van Zijverden

---

De Lairesestraat 51 Amsterdam  
E-Mail: [info@von-poll.nl](mailto:info@von-poll.nl)

*To Disclaimer of von Poll Immobilien GmbH*

---

[www.von-poll.com](http://www.von-poll.com)