

Luxembourg-gare – Gare
office for rent

Property ID: LU881900103



Property ID: LU881900103 - L-1611 Luxembourg-gare – Gare

- At a glance
- The property
- Energy Data
- Floor plans
- Contact partner

Property ID: LU881900103 - L-1611 Luxembourg-gare – Gare

At a glance

Property ID	LU881900103	Rent price	On request
Available from	23.01.2020	Commission	15% loyer annuel eco payé par le propriétaire
Floor	4		
Type of parking	2 x Underground car park, 280 EUR (Rent)	Total Space	ca. 434 m ²

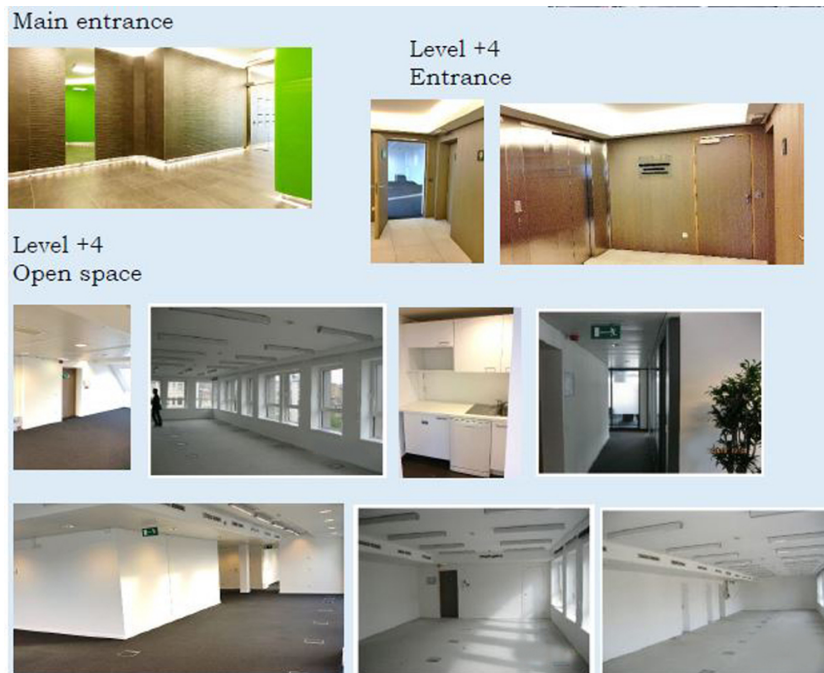
Property ID: LU881900103 - L-1611 Luxembourg-gare – Gare

Energy Data

Type of heating	District heating
Energy information	At the time of preparing the document, no energy certificate was available.

Property ID: LU881900103 - L-1611 Luxembourg-gare – Gare

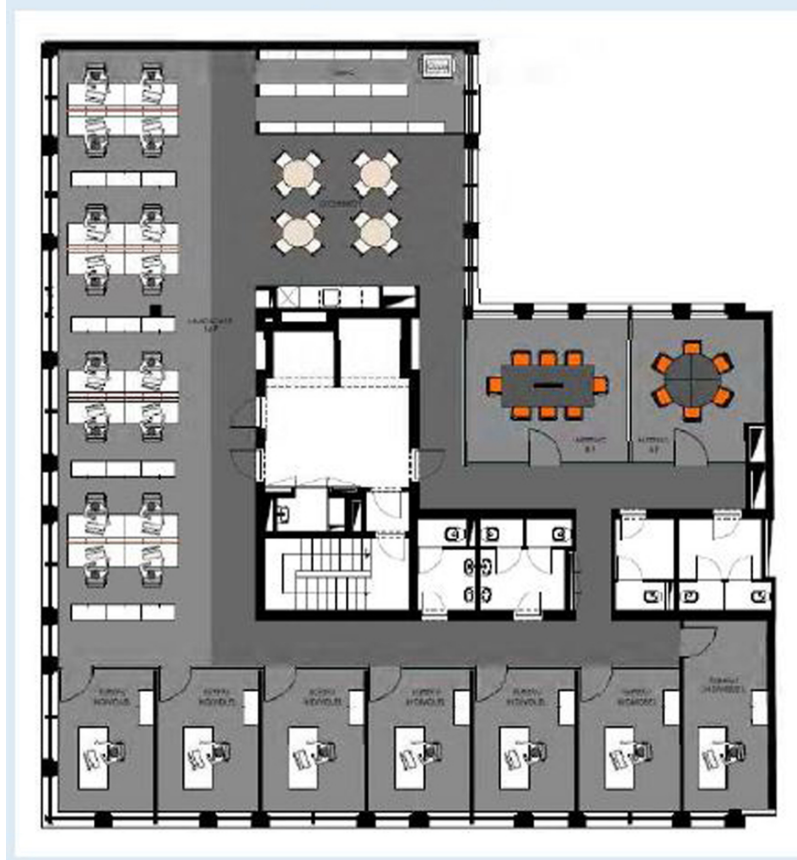
The property

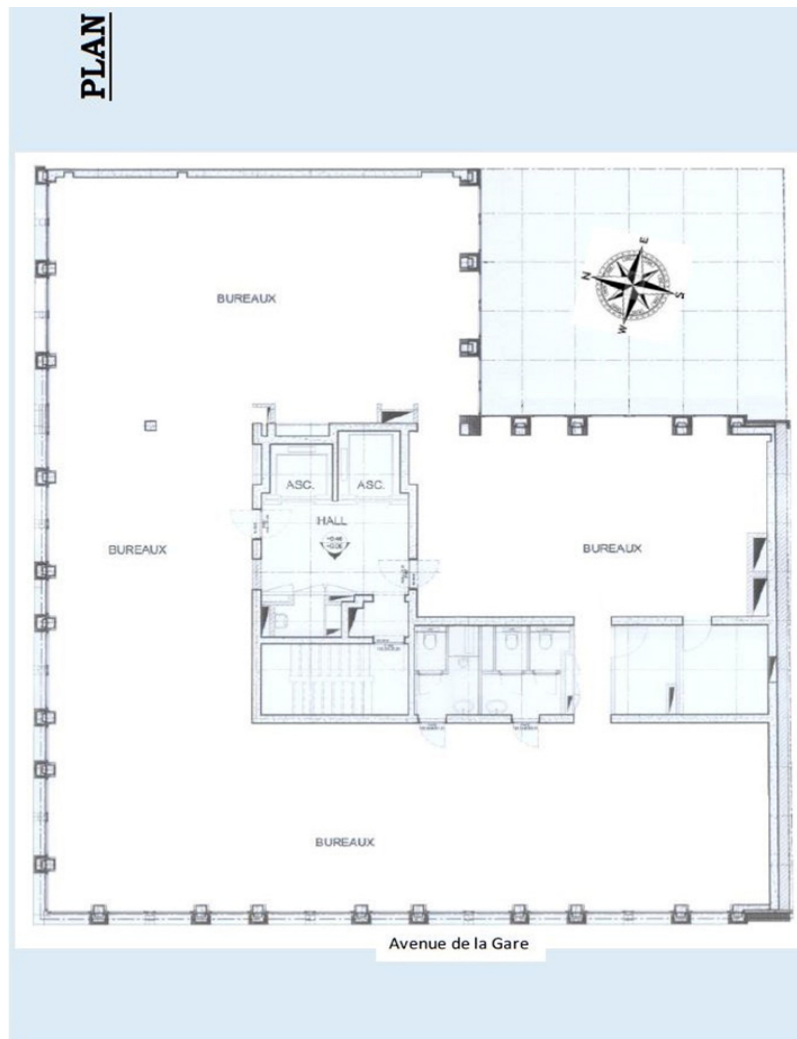


Property ID: LU881900103 - L-1611 Luxembourg-gare – Gare

Floor plans

Sample of fitting-out





This floor plan is not to scale. The documents were given to us by the client. For this reason, we cannot guarantee the accuracy of the information.

Property ID: LU881900103 - L-1611 Luxembourg-gare – Gare

Contact partner

For further information, please contact your contact person:

VON POLL REAL ESTATE Limpertsberg

6, avenue Pasteur Limpertsberg
E-Mail: limpertsberg@von-poll.com

To Disclaimer of von Poll Immobilien GmbH

www.von-poll.com