

Limpertsberg – Limpersberg

## Beautiful office space on the ground floor for rent

*Property ID: 62\_1*



Property ID: 62\_1 - L-1251 Limpertsberg – Limpersberg

- At a glance
- The property
- Floor plans
- A first impression
- Contact partner

Property ID: 62\_1 - L-1251 Limpertsberg – Limpersberg

## At a glance

Property ID	62_1	Rent price	On request
Year of construction	2001	Subject to commission	Yes
		Total Space	ca. 119 m²
		Condition of property	Like new

Property ID: 62\_1 - L-1251 Limpertsberg – Limpersberg

## The property



Property ID: 62\_1 - L-1251 Limpertsberg – Limpersberg

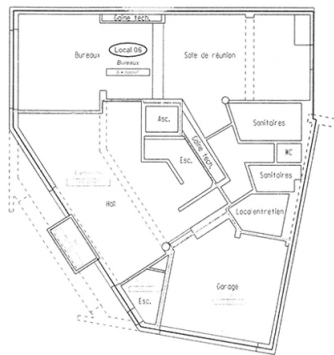
## The property





Property ID: 62\_1 - L-1251 Limpertsberg – Limpersberg

## Floor plans



This floor plan is not to scale. The documents were given to us by the client. For this reason, we cannot guarantee the accuracy of the information.

Property ID: 62\_1 - L-1251 Limpertsberg – Limpersberg

## A first impression

The office surfaces are located at the corner of Glacis and Avenue du Bois and offers a very good visibility. The complex was completely renovated in 2017 to provide optimum comfort to tenants. The surfaces are on the ground floor on the 2nd and 3rd floors. The property has all the amenities.

Property ID: 62\_1 - L-1251 Limpertsberg – Limpersberg

## Contact partner

For further information, please contact your contact person:

VON POLL REAL ESTATE Limpertsberg

---

6, avenue Pasteur, L-2310 Luxembourg

Tel.: +352 26 47 98

E-Mail: [limpertsberg@von-poll.com](mailto:limpertsberg@von-poll.com)

*To Disclaimer of von Poll Immobilien GmbH*

---

[www.von-poll.com](http://www.von-poll.com)