

Milano – Città Studi

# Bright penthouse apartment with panoramic view - Città Studi

Property ID: IT252942116



[www.von-poll.it](http://www.von-poll.it)

**PURCHASE PRICE: 1.499.000 EUR • ROOMS: 6**

Property ID: IT252942116 - 20133 Milano – Città Studi

- At a glance
- The property
- Floor plans
- A first impression
- Details of amenities
- All about the location
- Contact partner

Property ID: IT252942116 - 20133 Milano – Città Studi

## At a glance

Property ID	IT252942116
Available from	14.07.2025
Floor	6
Rooms	6
Bedrooms	4
Bathrooms	3
Year of construction	1960

Purchase Price	1.499.000 EUR
Commission	Subject to commission
Total Space	ca. 200 m <sup>2</sup>
Usable Space	ca. 200 m <sup>2</sup>
Equipment	Balcony

Property ID: IT252942116 - 20133 Milano – Città Studi

## The property





Property ID: IT252942116 - 20133 Milano – Città Studi

## The property



Property ID: IT252942116 - 20133 Milano – Città Studi

## The property





Property ID: IT252942116 - 20133 Milano – Città Studi

## The property



Property ID: IT252942116 - 20133 Milano – Città Studi

## The property



Property ID: IT252942116 - 20133 Milano – Città Studi

## The property





Property ID: IT252942116 - 20133 Milano – Città Studi

## The property





Property ID: IT252942116 - 20133 Milano – Città Studi

## The property



Property ID: IT252942116 - 20133 Milano – Città Studi

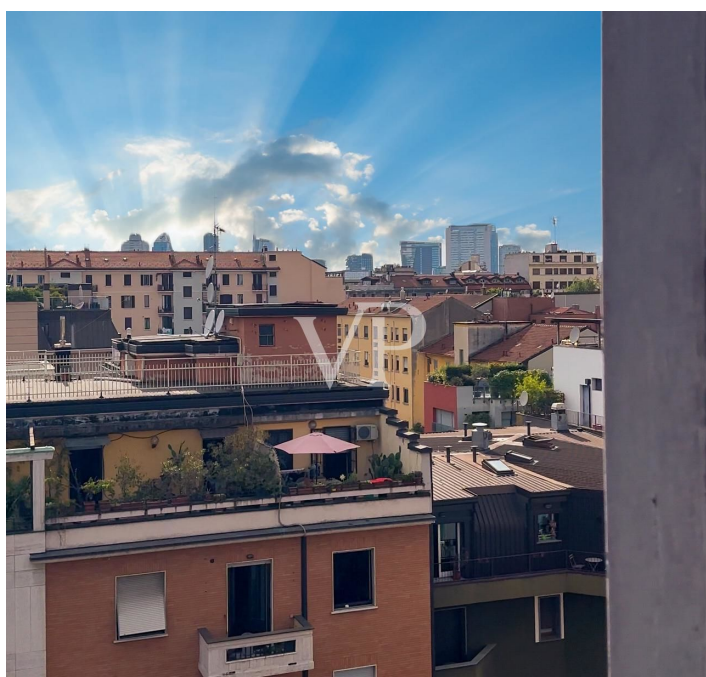
## The property





Property ID: IT252942116 - 20133 Milano – Città Studi

## The property



Property ID: IT252942116 - 20133 Milano – Città Studi

## The property





Property ID: IT252942116 - 20133 Milano – Città Studi

## The property



Property ID: IT252942116 - 20133 Milano – Città Studi

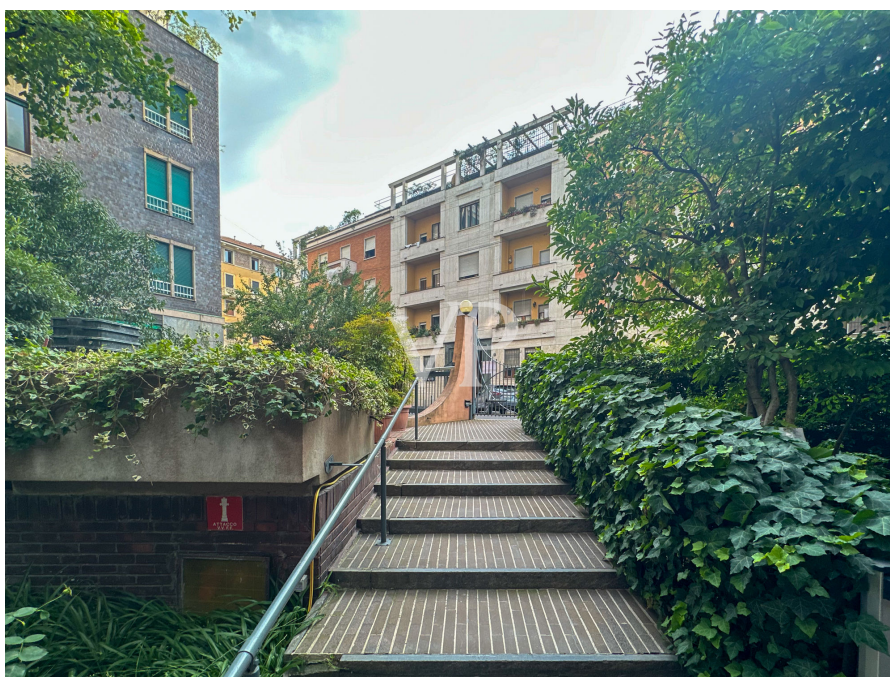
## The property





Property ID: IT252942116 - 20133 Milano – Città Studi

## The property





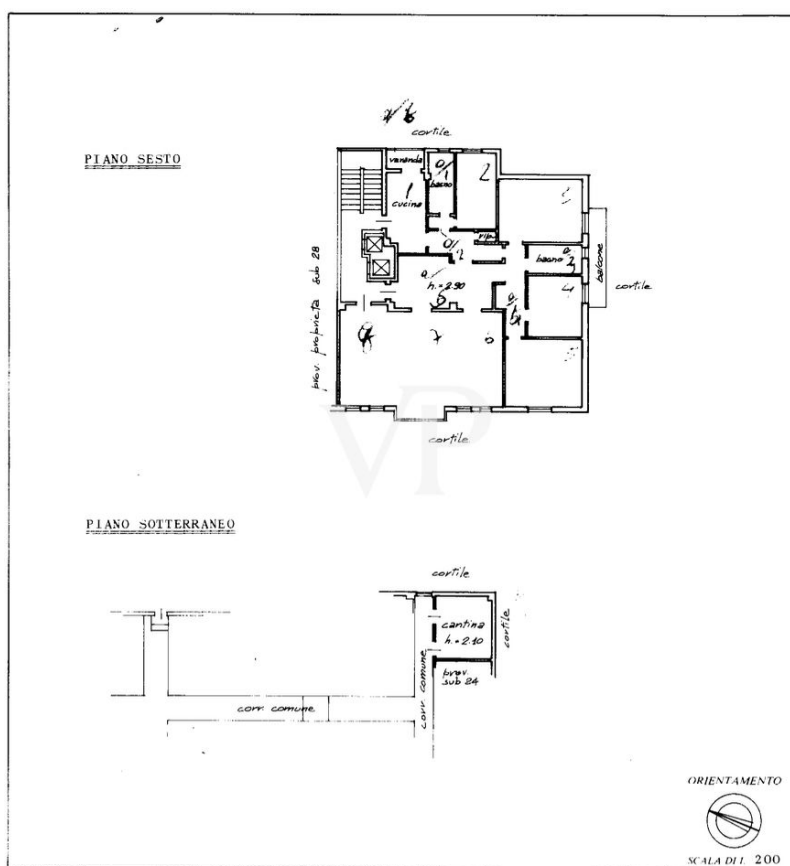
Property ID: IT252942116 - 20133 Milano – Città Studi

## The property



Property ID: IT252942116 - 20133 Milano – Città Studi

## Floor plans



This floor plan is not to scale. The documents were given to us by the client. For this reason, we cannot guarantee the accuracy of the information.

Property ID: IT252942116 - 20133 Milano – Città Studi

## A first impression

Bright penthouse apartment with panoramic view - Città Studi

On the sixth floor of an elegant 1960s building with all-day concierge service, we propose an elegant and spacious triple exposure penthouse apartment, surrounded by light and greenery.

The apartment, served by double elevators and double entrance, is distinguished by a rational and refined distribution of space that also offers the possibility of being fractionated.

The service entrance leads directly to the eat-in kitchen with balcony, adjacent to the dining area, ideal for family lunches or informal dinners. A windowed bathroom and a bedroom, perfect as a study or guest room, complete this area.

A door separates the service area from the large, fully glazed double living room, overlooking the well-kept condominium garden and elegant Via Garofalo. The view is open and evocative, with glimpses extending to the skyscrapers of Piazza Gae Aulenti.

The sleeping area, private and quiet, includes three large bedrooms and two bathrooms (one of which has a window). Two of the rooms overlook a second balcony, ideal for moments of relaxation in the open air.

The property has central heating, independent air conditioning and has a generously sized basement, perfect for any space needs.

A unique solution, free on deed, perfect for families or those looking for large spaces, tranquility and a strategic location in the heart of Città Studi.

Property ID: IT252942116 - 20133 Milano – Città Studi

## Details of amenities

- Double elevator
- Double entrance
- Daily concierge service
- Air conditioning system
- Cellar
- Two balconies
- Three bathrooms
- Standard installations

Property ID: IT252942116 - 20133 Milano – Città Studi

## All about the location

We are located in a quiet and well-served residential area, in the heart of the Città Studi - Lambrate district. The location is strategic, both for its proximity to the Politecnico di Milano (about 6 minutes walk) and for its proximity to the Loreto (M1 and M2) and Piola (M2) subway stations.

The area is also well connected by numerous bus and streetcar lines, which provide quick access to the city center and Milan's main areas of interest.

The area offers a wide range of services: supermarkets, pharmacies, schools, nearby stores, green areas such as the gardens of Piazza Aspromonte, as well as bars, restaurants, and venues typical of vibrant university life.

Ideal for students, professionals or families, the property is also a perfect opportunity for investors interested in a secure and steady income.



Property ID: IT252942116 - 20133 Milano – Città Studi

## Contact partner

For further information, please contact your contact person:

Christian Weissensteiner

---

Corso Italia 1, 20122 Milano

Tel.: +39 02 6206 9360

E-Mail: [milano@von-poll.com](mailto:milano@von-poll.com)

*To the Disclaimer of von Poll Immobilien GmbH*

---

[www.von-poll.com](http://www.von-poll.com)