

Claviere – Piemonte

## Hotel/Chalet to be customized with breathtaking views

Property ID: IT252942287



[www.von-poll.it](http://www.von-poll.it)

PURCHASE PRICE: 675.000 EUR • LAND AREA: 2.000 m<sup>2</sup>

Property ID: IT252942287 - 10050 Claviere – Piemonte

- At a glance
- The property
- Energy Data
- Floor plans
- A first impression
- Details of amenities
- All about the location
- Contact partner

Property ID: IT252942287 - 10050 Claviere – Piemonte

## At a glance

|                      |             |
|----------------------|-------------|
| Property ID          | IT252942287 |
| Bathrooms            | 20          |
| Year of construction | 1912        |
| Type of parking      | 11 x Other  |

|                       |                          |
|-----------------------|--------------------------|
| Purchase Price        | 675.000 EUR              |
| Commission            | Subject to commission    |
| Total Space           | ca. 2.000 m <sup>2</sup> |
| Condition of property | Needs renovation         |

Property ID: IT252942287 - 10050 Claviere – Piemonte

## Energy Data

|                                |            |  |                           |
|--------------------------------|------------|--|---------------------------|
| Energy certificate valid until | 01.07.2030 | Energy Certificate                                   | Energy demand certificate |
|                                |            | Final Energy Demand                                  | 212.00 kWh/m²a            |
|                                |            | Energy efficiency class                              | F                         |
|                                |            | Year of construction according to energy certificate | 1912                      |



Property ID: IT252942287 - 10050 Claviere – Piemonte

## The property





Property ID: IT252942287 - 10050 Claviere – Piemonte

## The property





Property ID: IT252942287 - 10050 Claviere – Piemonte

## The property





Property ID: IT252942287 - 10050 Claviere – Piemonte

## The property





Property ID: IT252942287 - 10050 Claviere – Piemonte

## The property





Property ID: IT252942287 - 10050 Claviere – Piemonte

## The property



Property ID: IT252942287 - 10050 Claviere – Piemonte

## The property





Property ID: IT252942287 - 10050 Claviere – Piemonte

## The property



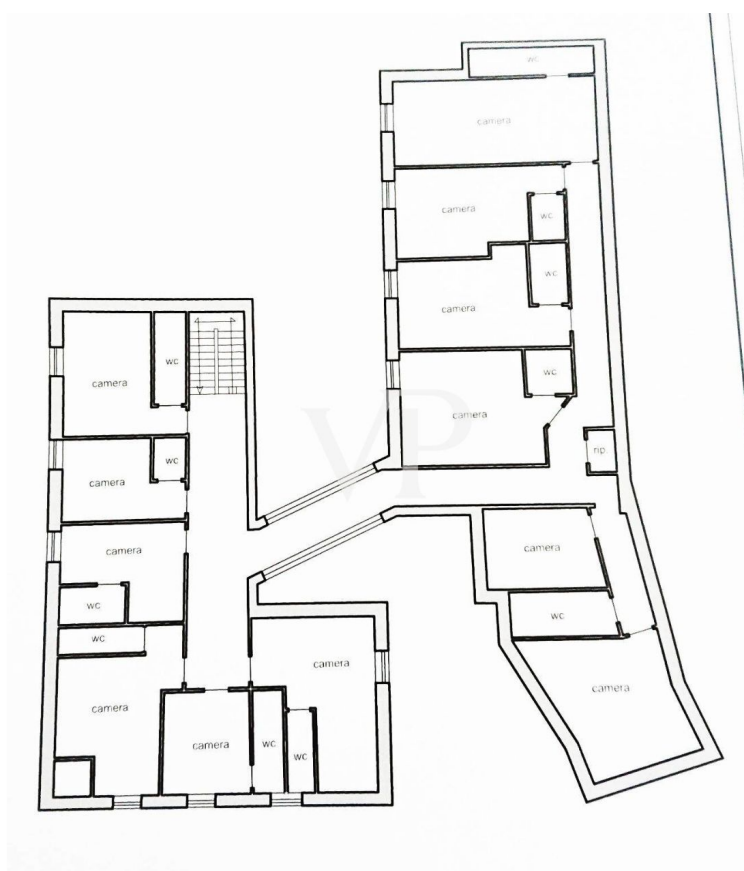
Property ID: IT252942287 - 10050 Claviere – Piemonte

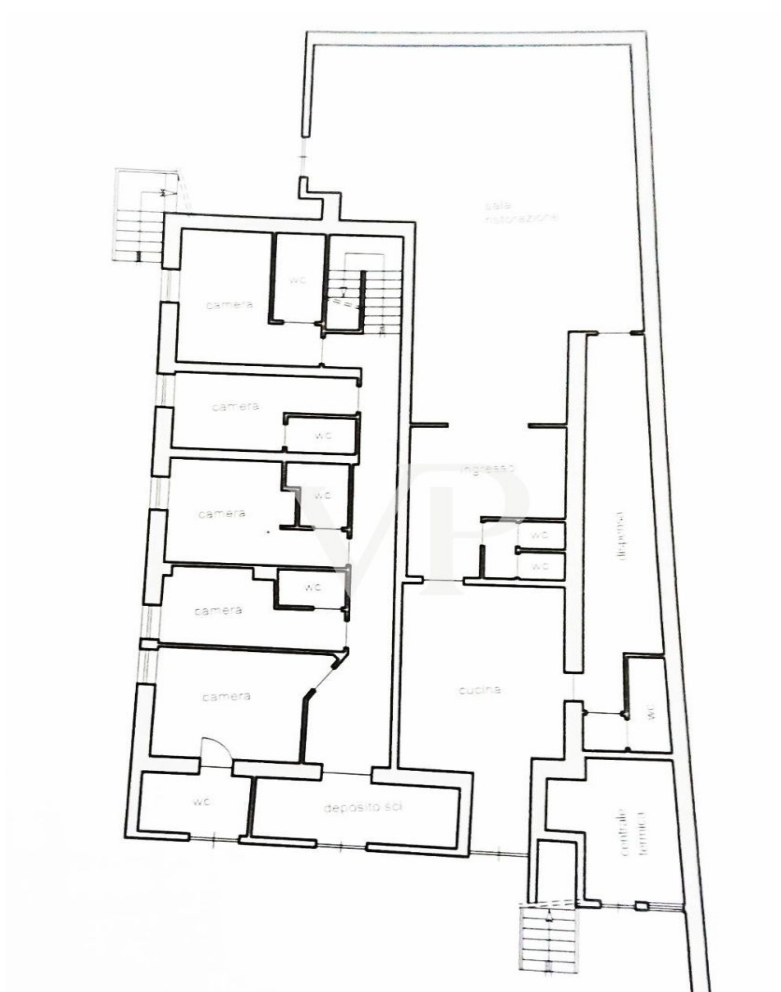
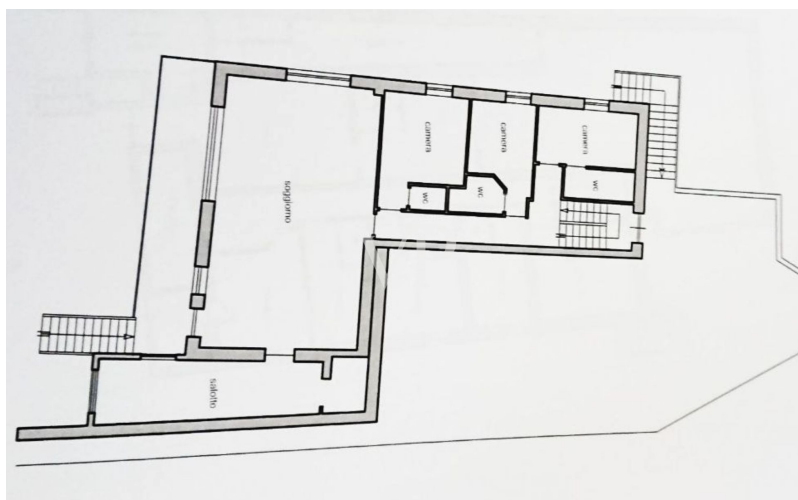
## The property



Property ID: IT252942287 - 10050 Claviere – Piemonte

## Floor plans





This floor plan is not to scale. The documents were given to us by the client. For this reason, we cannot guarantee the accuracy of the information.



Property ID: IT252942287 - 10050 Claviere – Piemonte

## A first impression

Prestigious historic accommodation for sale - Claviere (TO)

In the heart of the Cottian Alps, a few steps from the French border and the ski slopes of Monginevro, we offer for sale a prestigious historic property, ideal for those wishing to invest in the mountain hospitality sector.

The property is spread over several levels and offers breathtaking panoramic views on three sides, overlooking the surrounding mountains and the Claviere Golf Club (only 250 m away).

Key features:

- 20 bedrooms, each with private bathroom, all complying with current electrical and sanitary regulations.
- Large equipped professional kitchen, divided into functional areas: cooking area, storage, washing, pass and direct access for loading/unloading supplies.
- Large restaurant hall with panoramic outdoor terrace and possibility of independent access from outside.
- Spacious entrance hall with reception desk and open views on two sides.
- Panoramic terrace on the second floor.

Facilities and infrastructure:

- Fully functioning fire-fighting system
- Heating and hot water system overhauled in 2024
- Working plumbing and drainage systems
- Boiler cistern replaced in 2023
- Roofing and waterproofing completely redone in 2022
- Wi-Fi wired throughout the facility
- 11 private parking spaces in front of reception

The building is currently cleared of furniture and furnishings, offering the freedom to customize the interior according to your own design. The main interventions required are whitewashing and updating bathrooms.

Strategic location and services nearby:

- 100 m from 3 hiking trails
- 200 m from ski facilities

250 m from the golf club, municipal swimming pool and tennis courts

150 m from the French border

1.8 km from the center of Montgenevre (FR)

This property represents a unique opportunity for the development of a boutique hotel, accommodation facility or luxury vacation home, due to its exclusive location, generous size and advanced state of the facilities.

Property ID: IT252942287 - 10050 Claviere – Piemonte

## Details of amenities

- Fire protection system fully functional
- Heating and hot water system overhauled in 2024
- Plumbing and drainage systems in working order
- Boiler cistern replaced in 2023
- Roofing and waterproofing completely redone in 2022
- Wi-Fi wired throughout the facility
- 11 private parking spaces in front of reception



**Property ID: IT252942287 - 10050 Claviere – Piemonte**

## All about the location

Located in the heart of the Cottian Alps, Claviere is a renowned mountain resort in Piedmont, known for its authentic atmosphere, unspoiled nature, and quality services. The village is only 150 meters from the French border and is just 1.8 km from Montgenèvre (Monginevro), which can also be easily reached on foot or by short drive.

The property enjoys a privileged and very convenient location: a short walk from the town center, in a well-connected and serviced area, but immersed in the quiet and green of the mountains.

Within a short distance from the property are:

3 trekking trails just 100 meters away, ideal for scenic hikes suitable for all levels;

The Claviere and Via Lattea international ski facilities 200 meters away, with direct connection to the slopes;

Claviere Golf Club, among the oldest in Italy; municipal swimming pool and tennis courts, all within 250 meters;

Pharmacy, typical restaurants, bars, stores and essential services within easy walking distance in a few minutes;

Elementary school in the town center and secondary schools easily accessible in neighboring towns;

Shuttle service stop for surrounding towns and ski resorts.

The proximity to France and the main arterial roads makes Claviere a perfect destination for both tourism and year-round active accommodation: skiing in winter, golf and hiking in summer, with the added value of an authentic and relaxed atmosphere, in a naturalistic context of excellence.

Property ID: IT252942287 - 10050 Claviere – Piemonte

## Contact partner

For further information, please contact your contact person:

Christian Weissensteiner

---

Corso Italia 1, 20122 Milano

Tel.: +39 02 6206 9360

E-Mail: [milano@von-poll.com](mailto:milano@von-poll.com)

*To the Disclaimer of von Poll Immobilien GmbH*

---

[www.von-poll.com](http://www.von-poll.com)