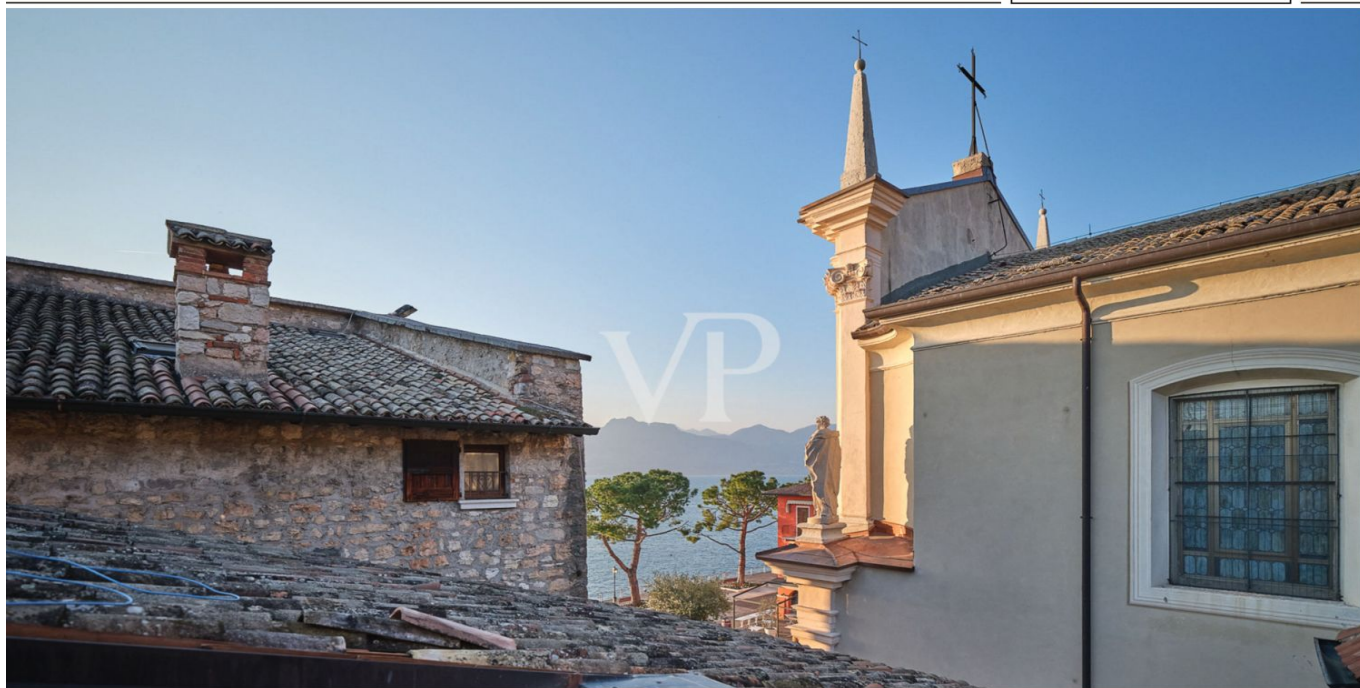


Torri Del Benaco – Gardasee

# Townhouse divided into 2 independent units

Property ID: IT254151961



[www.von-poll.it](http://www.von-poll.it)

LIVING SPACE: ca. 157 m<sup>2</sup>

Property ID: IT254151961 - 37010 Torri Del Benaco – Gardasee

- At a glance
- The property
- Energy Data
- Floor plans
- A first impression
- Contact partner

Property ID: IT254151961 - 37010 Torri Del Benaco – Gardasee

## At a glance

Property ID	IT254151961
Living Space	ca. 157 m²
Bedrooms	2
Bathrooms	2

Purchase Price	On request
Commission	subject to commission
Total Space	ca. 164 m²

Property ID: IT254151961 - 37010 Torri Del Benaco – Gardasee

## Energy Data

Power Source	Gas
Energy information	At the time of preparing the document, no energy certificate was available.

Property ID: IT254151961 - 37010 Torri Del Benaco – Gardasee

## The property





Property ID: IT254151961 - 37010 Torri Del Benaco – Gardasee

## The property



Property ID: IT254151961 - 37010 Torri Del Benaco – Gardasee

## The property





Property ID: IT254151961 - 37010 Torri Del Benaco – Gardasee

## The property





Property ID: IT254151961 - 37010 Torri Del Benaco – Gardasee

## The property



Property ID: IT254151961 - 37010 Torri Del Benaco – Gardasee

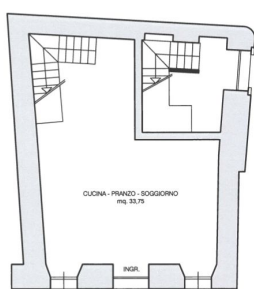
## The property



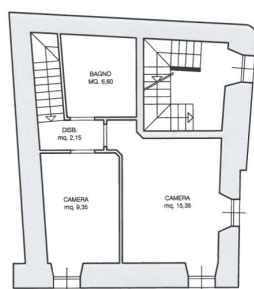
Property ID: IT254151961 - 37010 Torri Del Benaco – Gardasee

## Floor plans

PIANO TERRA

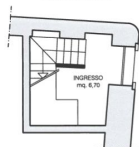


PRIMO PIANO

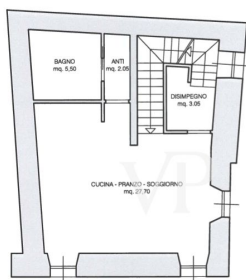


APPARTAMENTO - Via Chiesa, 12

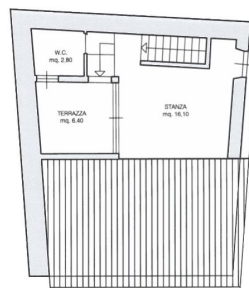
PIANO TERRA



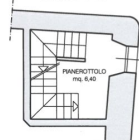
SECONDO PIANO



TERZO PIANO



PRIMO PIANO



APPARTAMENTO - Via A. Volta

This floor plan is not to scale. The documents were given to us by the client. For this reason, we cannot guarantee the accuracy of the information.

**Property ID: IT254151961 - 37010 Torri Del Benaco – Gardasee**

## A first impression

Townhouse with lake view in Torri del Benaco - ideal for investment

In the charming setting of Torri del Benaco, a few steps from the lake and the main services, we offer for sale a charming detached terraciolo, divided into two fully autonomous units.

The property is developed on two levels:

on the ground floor we find the first unit (duplex) with an area of 67 sqm net and 78 sqm commercial, while on the first floor is developed the second unit (also on two levels), with 71 sqm net and 86 sqm commercial, to which is added a terrace of 7 sqm with stunning views of the lake.

The two units, both with separate entrances, offer the possibility of being used separately, perfect for tourist rentals, or as a combined living solution.

The panoramic terrace is one of the strengths of the property, ideal for enjoying moments of relaxation and the timeless charm of Lake Garda.

This property is the ideal solution for those looking for a solid and versatile investment in one of the most desirable locations of the Garda Riviera.

Contact us for more details or to arrange a viewing.



Property ID: IT254151961 - 37010 Torri Del Benaco – Gardasee

## Contact partner

For further information, please contact your contact person:

Christian Weissensteiner

---

Largo Dante Alighieri, n.3, 25087 Salò

Tel.: +39 0365 690596

E-Mail: [salo@von-poll.com](mailto:salo@von-poll.com)

*To the Disclaimer of von Poll Immobilien GmbH*

---

[www.von-poll.com](http://www.von-poll.com)