

Glyfada

# Marigold

????????? ??????????: 953571



????? ?????????: 380.000 EUR

??????? ?????????: 953571 - 14561 Glyfada



?? ??? ??????



?? ????????



??? ?????? ??????????



????????????? ??????????????

??????? ?????????: 953571 - 14561 Glyfada

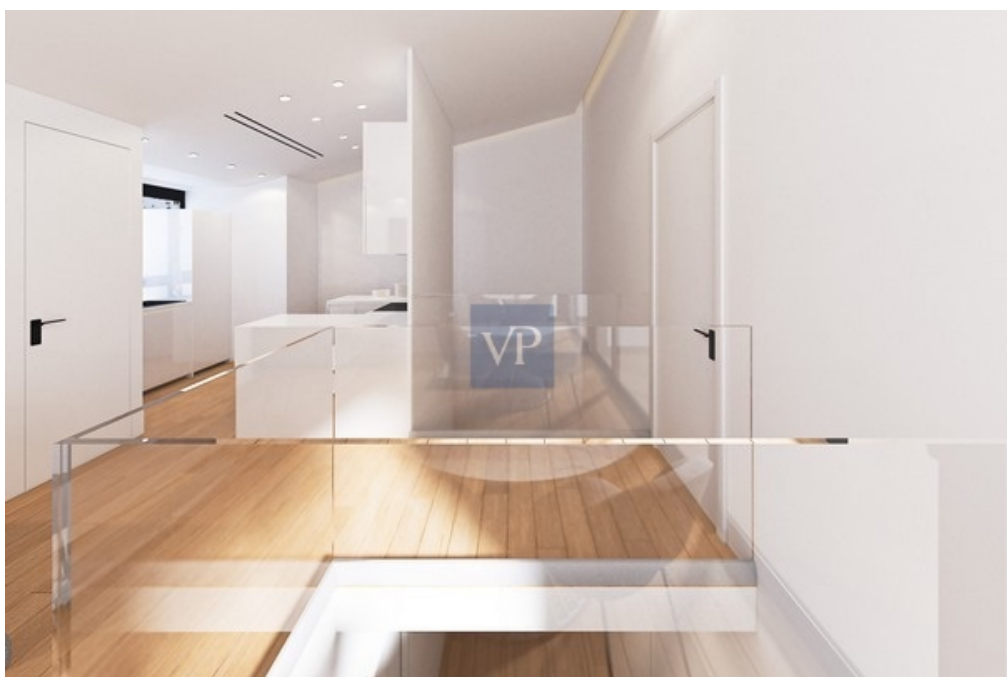
?? ??? ??????

??????? ?????????	953571	???? ??????	380.000 EUR
?????????? ??	2	????????	
????????		???????? ??????	ca. 85 m²
????????	1		



???????? ?????????: 953571 - 14561 Glyfada

?? ?????????





???????? ??????????: 953571 - 14561 Glyfada

?? ?????????



??????? ???????: 953571 - 14561 Glyfada

??? ?????? ?????????

Welcome to Marigold, a beautiful 85-square-meter apartment located in the heart of Glyfada, one of the most sought-after areas in the southern suburbs of Athens. Spanning the second and third floors of an innovative building, this apartment boasts modern architectural standards, blending sophistication with comfort.

Upon entering the second floor, you are immediately welcomed by a spacious and luminous living room, where natural light fills the space, creating a warm and inviting atmosphere. The living area flows seamlessly into the elegant dining room, offering the perfect setting for both intimate meals and social gatherings.

Continuing through the apartment, you'll discover a meticulously designed kitchen, fully equipped with top-of-the-line appliances, combining functionality with modern style to satisfy all your culinary needs.

This apartment features two well-sized bedrooms, providing comfort and tranquility. The master bedroom, however, is a true highlight, with breathtaking panoramic views of Glyfada and the sparkling horizon of the sea. It offers the perfect retreat to unwind and enjoy the beauty of the surrounding area.

Glyfada is renowned for its exceptional blend of seaside living and close proximity to the heart of Athens. Known for its beautiful beaches and vibrant atmosphere, the area offers a unique lifestyle where you can enjoy the peace of the coast while having easy access to the city center. Excellent transport links, including Poseidonos Avenue and the tram, ensure effortless connectivity, while the proximity to Eleftherios Venizelos International Airport makes Marigold ideal for frequent travelers.

Experience modern, luxurious living with all the conveniences of Glyfada at your doorstep in Marigold.

??????? ?????????: 953571 - 14561 Glyfada

????????????? ????????????????

??? ?????????????? ?????????????, ?????????????? ?? ??? ?????????? ?????????????? ???:

VON POLL REAL ESTATE Athens

---

Kifisias Avenue 227, 14561 Kifisia

Tel.: +30 21 06 14 87 77

E-Mail: [salesgreece@von-poll.com](mailto:salesgreece@von-poll.com)

???? ?????????? ???????? ??? von Poll Immobilien GmbH

---

[www.von-poll.com](http://www.von-poll.com)