

Mets - Kalimarmaro

# Mirage Retreat

????????? ??????????: 1062644



???? ??????????: 10.500 EUR

???????? ??????????: 1062644 - 11636 Mets - Kalimarmaro

- ☐ ?? ??? ??????
- ☐ ?? ?????????
- ☐ ??? ?????? ??????????
- ☐ ?????????????? ?????????????????

???????? ??????????: 1062644 - 11636 Mets - Kalimarmaro

?? ??? ??????

|                     |         |
|---------------------|---------|
| ???????? ?????????? | 1062644 |
| ???????????? ???    | 3       |
| ??????????          |         |
| ??????????          | 2       |

|                    |            |
|--------------------|------------|
| ????? ???????????  | 10.500 EUR |
| ?????????????      | ???????    |
| ?????????? ??????? | ca. 237 m² |

???????? ?????: 1062644 - 11636 Mets - Kalimarmaro

?? ???????





???????? ??????????: 1062644 - 11636 Mets - Kalimarmaro

?? ????????



???????? ?????: 1062644 - 11636 Mets - Kalimarmaro

?? ???????





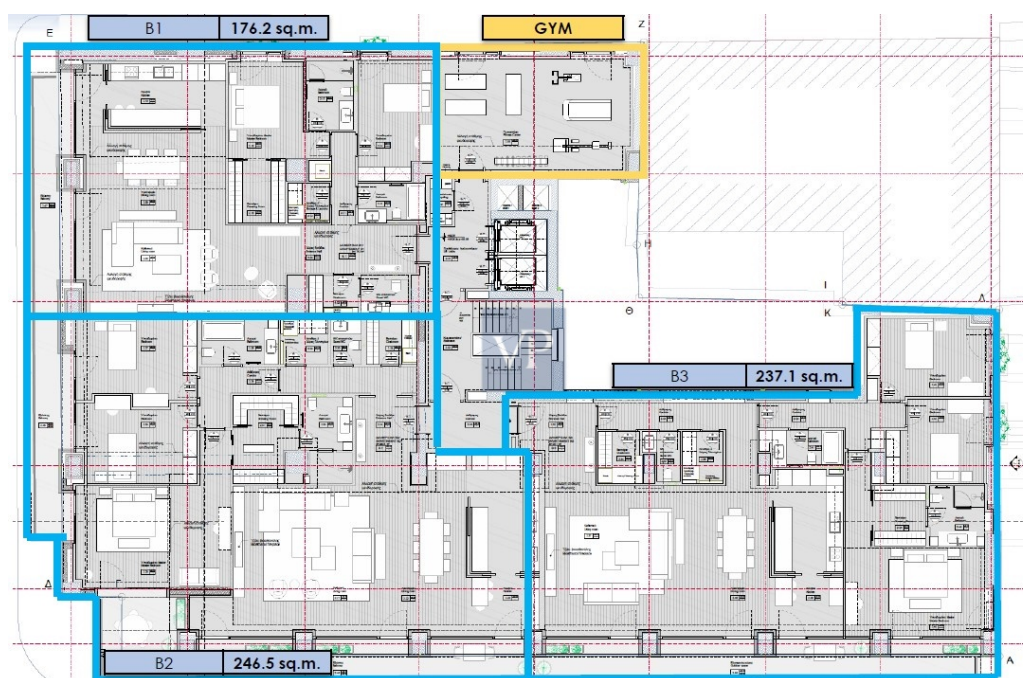
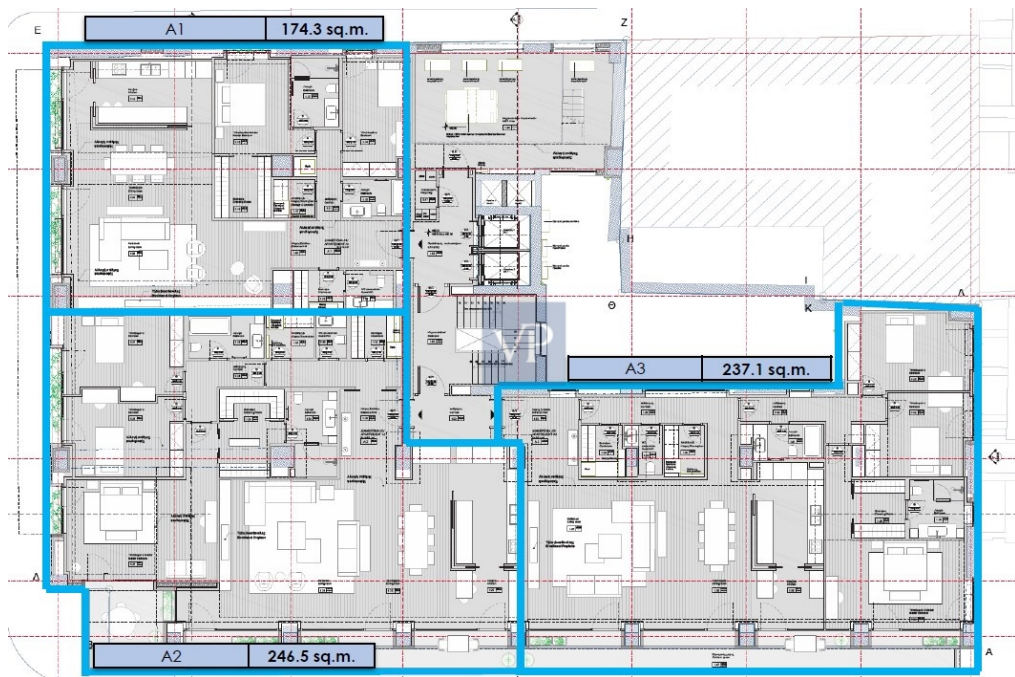
???????? ?????: 1062644 - 11636 Mets - Kalimarmaro

?? ???????



??????? ???????: 1062644 - 11636 Mets - Kalimarmaro

?? ????????





??????? ???????: 1062644 - 11636 Mets - Kalimarmaro

??? ?????? ?????????

Mirage Retreat is a rare sanctuary in the heart of Athens, offering an exceptional blend of elegance, comfort, and modern luxury. Situated in the sought-after Mets-Kalimarmaro area, this stunning 2nd-floor apartment has been fully renovated in 2024, providing an immaculate living space that effortlessly combines style with functionality.

The apartment features three spacious bedrooms, including a luxurious master suite, and two beautifully designed bathrooms. An additional guest WC ensures convenience for residents and visitors alike. The expansive living room, bathed in natural light, creates the perfect setting for both relaxation and entertaining, while the modern, fully-equipped kitchen invites culinary creativity in a space designed for convenience and beauty.

Equipped with autonomous heating through a heat pump system, Mirage Retreat is as environmentally conscious as it is comfortable, boasting an impressive A+ energy rating. The apartment is filled with thoughtful details, including wooden flooring throughout and aluminum, thermal break frames with double-glazed, energy-efficient windows that not only provide a peaceful ambiance but also offer unobstructed city views that stretch across Athens.

Perfectly positioned for those who appreciate the vibrancy of the city yet desire a peaceful retreat, Mirage Retreat offers unmatched proximity to transportation, the city center, the Acropolis, and the Museum. This home offers more than just a place to live—it offers a lifestyle of convenience, luxury, and culture.

With an underground parking space and ample storage, Mirage Retreat is designed to cater to your every need. From its pristine condition to its seamless connection to Athens' most iconic landmarks, this apartment is a rare gem in a prime location. Come experience a unique blend of modern living in one of the world's most historic cities.

???????? ??????????: 1062644 - 11636 Mets - Kalimarmaro

????????????? ????????????????

??? ?????????????? ??????????????, ?????????????? ?? ??? ?????????? ?????????????? ???:

VON POLL REAL ESTATE Athens

---

Kifisias Avenue 227, 14561 Kifisia

Tel.: +30 21 06 14 87 77

E-Mail: [salesgreece@von-poll.com](mailto:salesgreece@von-poll.com)

???? ?????????? ???????? ??? von Poll Immobilien GmbH

---

[www.von-poll.com](http://www.von-poll.com)