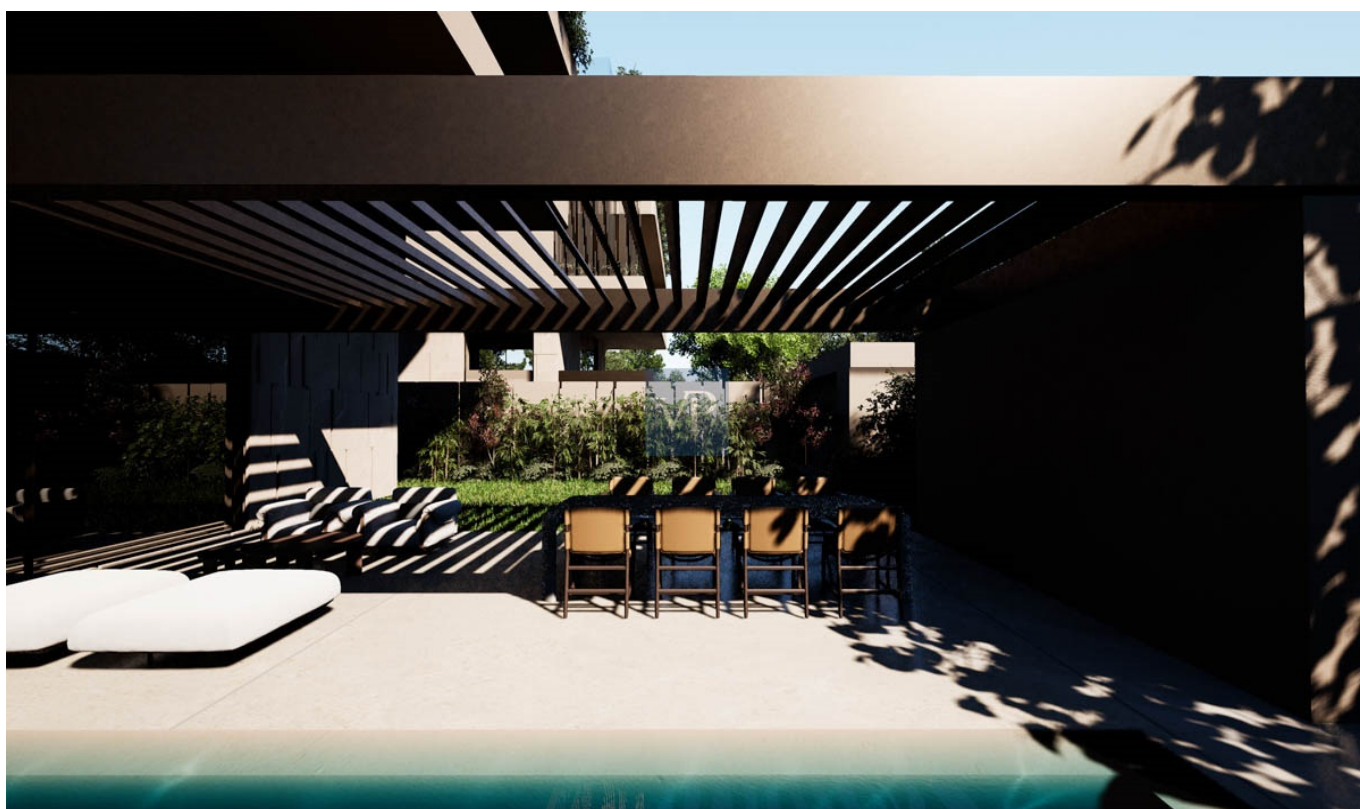


Kifissia

Serenelle

CODICE OGGETTO: 912437

PREZZO D'ACQUISTO: 2.500.000 EUR • SUPERFICIE DEL TERRENO: 1.569 m²

CODICE OGGETTO: 912437 - 14562 Kifissia

- A colpo d'occhio
- La proprietà
- Una prima impressione
- Partner di contatto

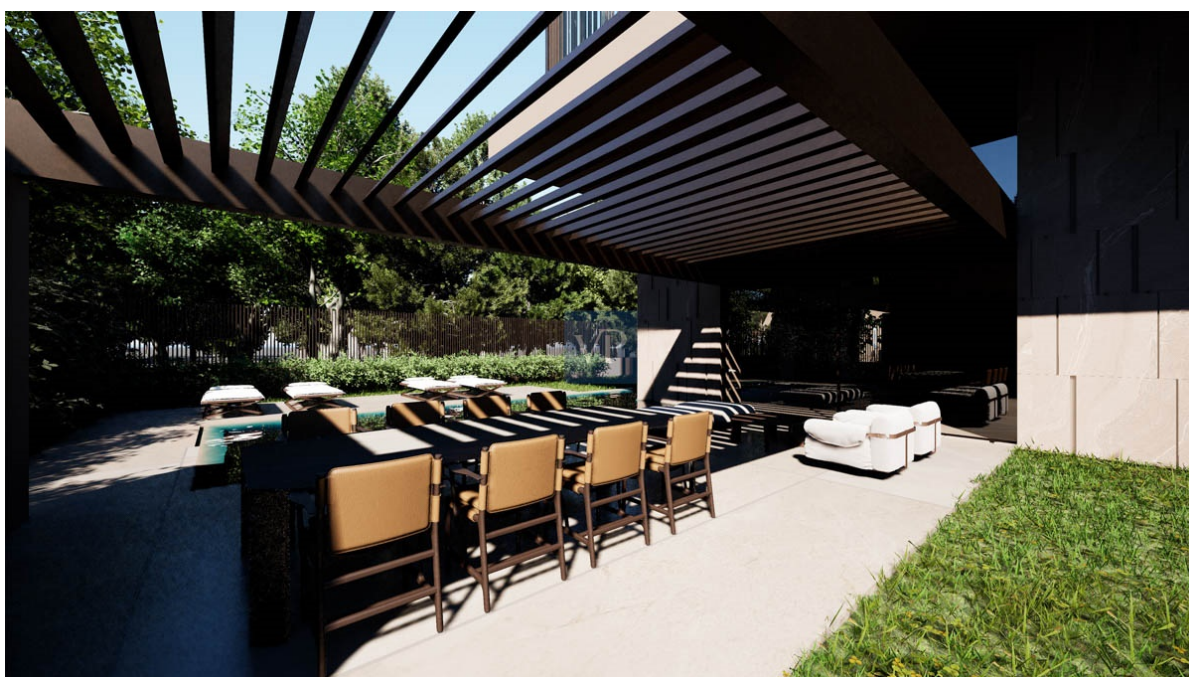
CODICE OGGETTO: 912437 - 14562 Kifissia

A colpo d'occhio

CODICE OGGETTO	912437	Prezzo d'acquisto	2.500.000 EUR
Camere da letto	3	Appartamento	Piano
Bagni	3	Superficie commerciale	ca. 202 m ²

CODICE OGGETTO: 912437 - 14562 Kifissia

La proprietà



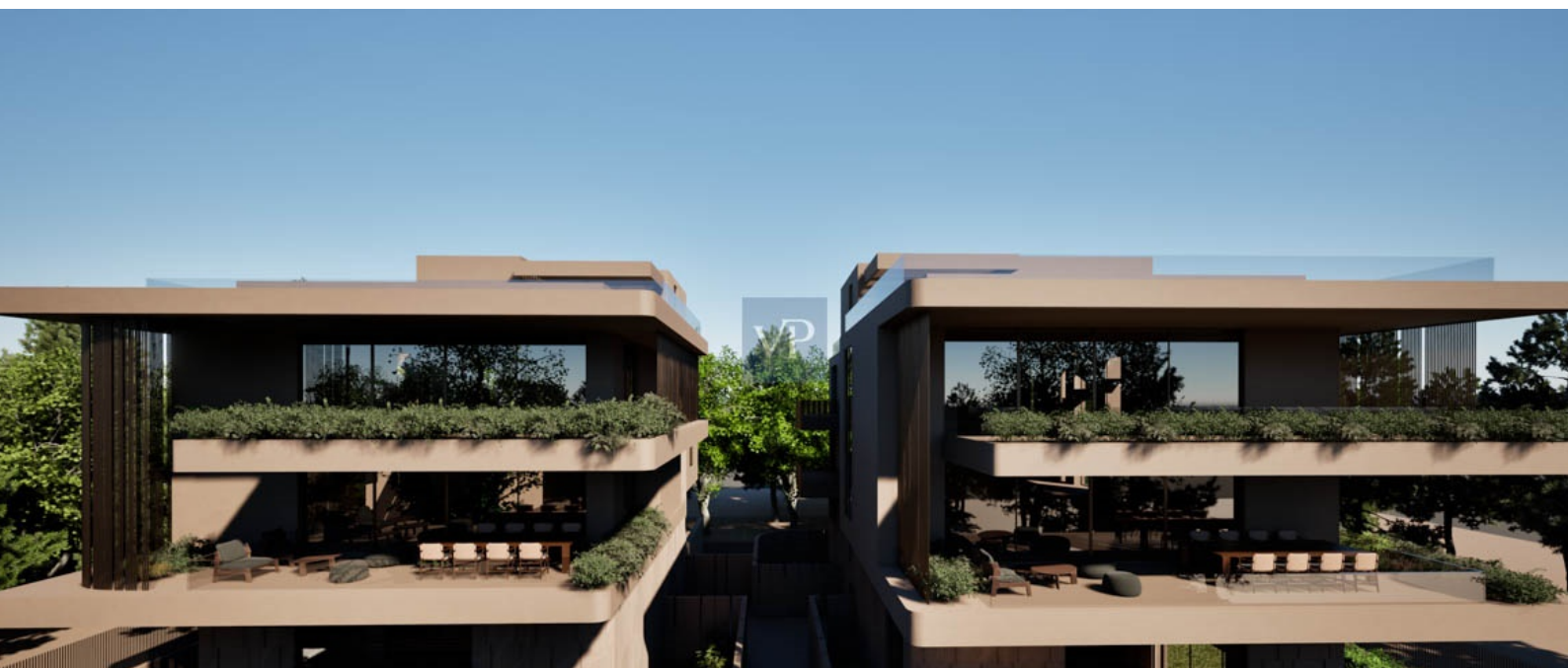
CODICE OGGETTO: 912437 - 14562 Kifissia

La proprietà



CODICE OGGETTO: 912437 - 14562 Kifissia

La proprietà



CODICE OGGETTO: 912437 - 14562 Kifissia

La proprietà



CODICE OGGETTO: 912437 - 14562 Kifissia

La proprietà



CODICE OGGETTO: 912437 - 14562 Kifissia

La proprietà



CODICE OGGETTO: 912437 - 14562 Kifissia

Una prima impressione

Nestled in the elite neighborhood of Kefalari in Kifisia, Serenelle invites you to experience the pinnacle of luxury living. This exquisite first-floor residence in Building B (B2) is a testament to modern elegance, crafted with impeccable architectural precision and designed for those who value sophistication, comfort, and a cosmopolitan lifestyle rooted in Greek heritage.

Spanning an impressive 202.30 sq.m., Serenelle welcomes you with a grand reception area that sets the tone for the elegance that follows. The spacious living room is the epitome of refined comfort, its natural light creating a warm and inviting ambiance, perfect for entertaining or quiet relaxation. A beautifully appointed dining room seamlessly connects to the modern kitchen, a space where functionality meets timeless design.

The private quarters of the residence are equally extraordinary. A luxurious master bedroom with an ensuite bathroom provides the ultimate retreat, offering tranquility and privacy. Two additional bedrooms, both with their own ensuite bathrooms, cater to the comfort of family or guests. Seven thoughtfully designed guest WCs are perfectly distributed to ensure convenience throughout the home.

Beyond the main residence, Serenelle offers exceptional additional spaces in the basement of Building B. A versatile 27.35 sq.m. studio presents endless possibilities, from a private office to a guest suite. A 12.50 sq.m. storage room ensures effortless organization, while two dedicated parking spaces enhance convenience.

Living at Serenelle means immersing yourself in the unmatched charm of Kefalari, one of Athens' most sought-after neighborhoods. Known for its lush greenery, stately mansions, and sophisticated lifestyle, Kefalari offers a perfect blend of serenity and vibrancy. Its tree-lined streets host boutique shops, fine dining establishments, and elegant cafés, making it a haven for those seeking a refined urban retreat.

Owning Serenelle is more than acquiring a residence—it's claiming your place in a prestigious community that perfectly balances tradition, modernity, and exclusivity. This is your opportunity to live amidst elegance, comfort, and the unmistakable allure of Kefalari in Kifisia.

CODICE OGGETTO: 912437 - 14562 Kifissia

Partner di contatto

Per ulteriori informazioni, si prega di contattare la persona di riferimento:

VON POLL REAL ESTATE Athens

Kifisias Avenue 227, 14561 Kifisia

Tel.: +30 21 06 14 87 77

E-Mail: salesgreece@von-poll.com

Alla clausola di esclusione di responsabilità di von Poll Immobilien GmbH

www.von-poll.com